

Stormwater Pollution Prevention

For Commercial and Industrial
Businesses

Why is stormwater runoff a problem?

- Stormwater picks up debris, chemicals, dirt, and other pollutants and flows untreated, directly to our lakes, streams, and rivers.
- Anything that enters the storm sewer system is discharged untreated into the waterbodies we use for swimming, fishing, and providing drinking water.

Businesses of Particular Concern

- Any business that has a parking area, loading/unloading zone, deals with chemicals, or creates land-disturbing activities is of concern.
- Examples of these businesses include: construction, agriculture, forestry, automotive facilities, machine shops, retail stores, dry-cleaners, landscapers, restaurants, and car-washes.

Tips For Reducing Pollution

- Sweep up litter and debris from sidewalks, driveways, and parking lots.
- Cover grease storage, chemical storage, and dumpsters and keep them clean to avoid leaks.
- Clean up spills or leaks when they happen



Restaurants



- Pour washwater into a janitorial or mop sink. Do not pour it onto a parking lot, alley, sidewalk or street.
- Clean floormats, filters, and garbage cans in a mop sink, or over an internal floor drain.
- Recycle grease and oil. Don't pour it into sinks, floor drains, onto parking lot or street.

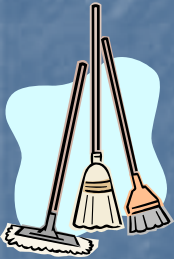




Restaurants



- Use dry methods for spill cleanup (sweeping, cat litter, etc.). Don't hose down spills.



Keep dumpster area clean and lid closed. Don't fill it with liquid waste or hose it out.

- Keep parking lots and outside areas of restaurant clean and free of debris and litter.
- Ensure all floor drains are connected to the sanitary sewer system.





Automotive Shops



- Clean up spills immediately and properly dispose of cleanup materials.
- Provide cover over fueling stations and design or retrofit facilities for spill containment.
- Properly maintain fleet vehicles to prevent oil, gas, and other discharges from being washed into local waterbodies.





Automotive Shops



- Install and maintain oil/water separators.
- Cover all materials that are stored outdoors (used parts, old fluids, tires, etc.).
- Recycle all used fluids.

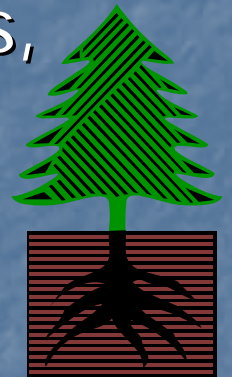


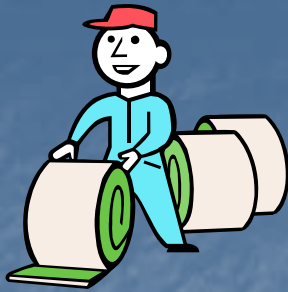


Construction



- Divert all stormwater flows away from disturbed or exposed areas of the construction site.
- Install silt fences, vehicle mud removal areas, vegetative cover, and other sediment and erosion controls and maintain them.
- Prevent soil erosion by minimizing disturbed areas during construction projects, and seed and mulch bare areas as soon as possible.





Landscaping



- Design a landscape that reduces runoff and encourages natural infiltration of rain.
- Leave undisturbed vegetative buffers along stream banks.
- Cover all storm drains before hydro-seeding to ensure material does not wash into streams and rivers.
- Apply only the amount of fertilizer or pesticide recommended on the label.





Landscaping



- Sweep up fertilizer that is spread or spilt on paved surfaces, do not wash it off.
- Do not blow, sweep or dump grass clippings into storm drains or waterways.



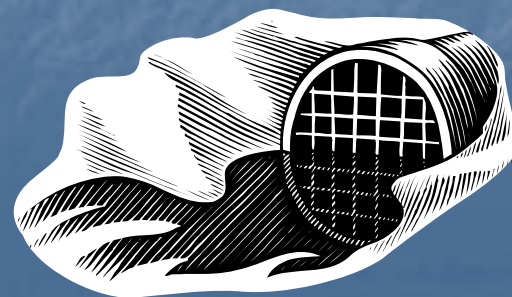
- Use native vegetation when possible to create a drought-tolerant, low-maintenance landscape.



Car Washes



- Store chemicals (soaps, drying agents, waxes, etc.) in an indoor location or covered outdoors.
- Use a water recycling system.
- Keep drains, traps, etc. maintained and functioning properly.
- Keep trash, litter, and spills cleaned up daily.
- Do not allow wastewater to drain into any storm drain or waterway.



Dry-Cleaners & Laundromats



- Store chemicals, detergents, etc. in an indoor location.
- Do not allow wastewater to drain into any storm drain or waterway.
- Ensure all floor drains are connected to the sanitary sewer or septic system.
- Ensure the capacity of the septic system will accommodate the daily load of wastewater.

